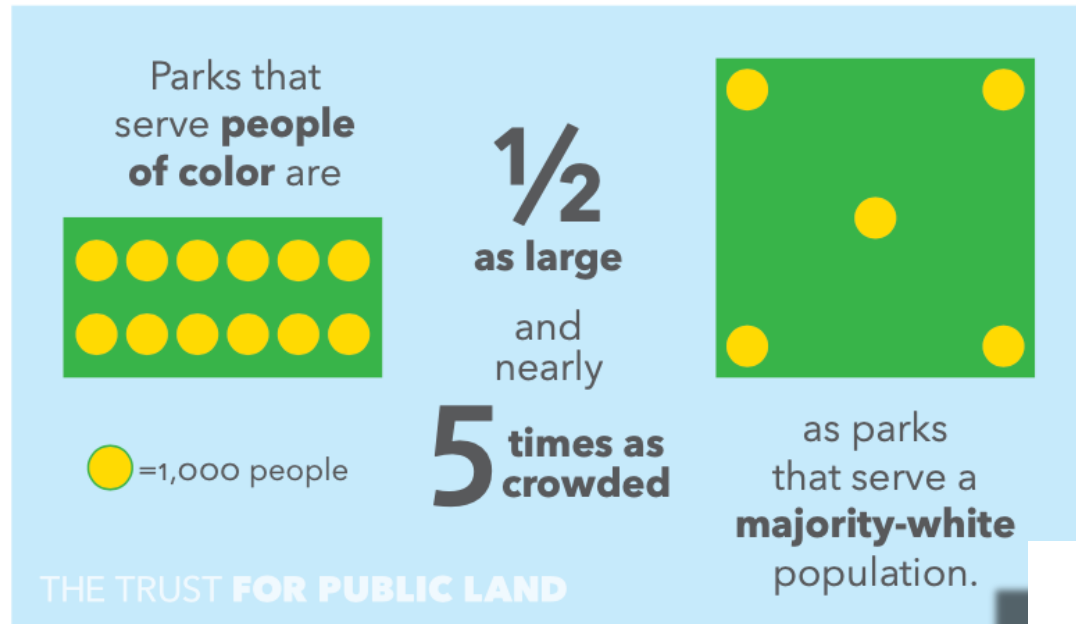


Human Flourishing: *Imagine a Just City*

In this course we will explore systems of structural racism in the environment (including parks and pollution), health, the criminal legal system, and many other aspects of society. We will couple this with exercises in imagining radical change through policy, art, and activism.



Outdoor activists who advocate for marginalized communities say that the history of park development is tied up with the history of white supremacy.